

eLock-Lingual 3D

eLock-Lingual 3D is a new kind of self-ligating lingual system invented by eBrace Lingual which is comfortable and invisible for patient. With great preciousness, eLock-Lingual 3D provides better 3D controlling for the moving of teeth. In addition, its feature of passive self-ligation and low friction could achieve fast alignment easily.



Easy Operation

The design of sliding self-ligation makes operation easier



Hook & Wing

Wing and hook remain for better assisted ligation and elastic traction



Prescription	Tooth	Torque	Ang.	Width	
.018"	1	30°	0°	2.8mm	
	2	30°	0°	2.8mm	
	Upper	3	30°	0°	2.8mm
		4	10°	0°	2.8mm
		5	10°	0°	2.8mm
		6	10°	0°	3.5mm
Lower	1	35°	0°	2.4mm	
	2	35°	0°	2.4mm	
	3	35°	0°	2.4mm	
	4	10°	0°	2.8mm	
	5	10°	0°	2.8mm	
	6	0°	0°	3.5mm	



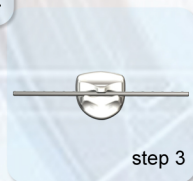
eLock-Lingual 2D

The brand new innovation by eBrace Lingual



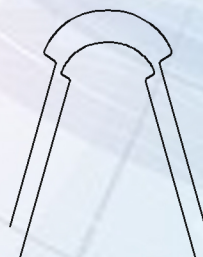
The design of passive self-ligation provides low friction and fast alignment

ONLY thickness of 1.5 mm highly enhances the comfortability

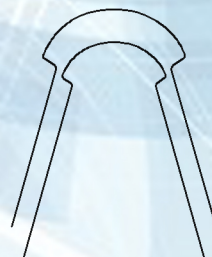


Uniquely self-ligating mechanism offers easy operations and makes wires-changing more convenient.

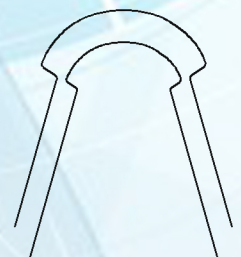
Different size of preformed mushroom archwires for different choice



Small



Middle



Big

eLock-Buccal



- Small size for extreme comfort
- Low friction for fast alignment
- Simple design for easy operation

Prescription	Tooth	Torque	Ang.	Width	In/Out	
MBT*.022	Upper	1	+17°	+4°	3.5mm	0.7mm
		2	+10°	+8°	3.0mm	1.3mm
		3	0°/-7°	+8°	3.1mm	0.7mm
		4	-7°	0°	3.1mm	0.7mm
		5	-7°	0°	3.1mm	1.2mm
	Lower	1	-6°	0°	2.6mm	1.3mm
		2	-6°	0°	2.6mm	1.3mm
		3	0°/-6°	+3°	3.1mm	0.7mm
		4	-12°	+2°	3.1mm	0.7mm
		5	-17°	+2°	3.1mm	0.7mm
Tube	Tooth	Torque	Rot	Width	In/Out	
	16/26	-14°	10°	4mm	0.7mm	
	36/46	-20°	0°	4mm	0.4mm	